

FINAL REPORT

**Capacity Development and technical support for Drainage line
Treatment and Environment Benefit works through MGNREGA in
Rajnandgaon, Chhattisgarh**

Period: 1 Dec 2017 to 30 April 2018

Submitted to:

**Deutsche Gesellschaft für Internationale Zusammenarbeit (GIZ) GmbH, New Delhi
And
State MGNREGS cell Chhattisgarh**



Samarthan- Centre for Development Support

House No- 1, Behind Bank of Baroda, KPS Dunda Road, Devpuri, Raipur,
Chhattisgarh- 492007, E-Mail: samarthan_raipur@yahoo.co.in



1. Background

GIZ and Ministry of Rural Development, Government of India signed a five-year agreement on “Environmental benefits through Mahatma Gandhi National Rural Employment Guarantee Act (MGNREGS-EB)” in April 2013. The objective of MGNREGS-EB was to implement high quality works through MGNREGS while taking into consideration environmental aspects. It involved participation of community with capacity building of Panchayats to undertake works related to natural resource management. Indicators have also been developed by MoRD and GIZ to measure the progress on project objectives like development of demonstration sites based on principles of natural resource management, participation of women in Gram Sabhas. The Indo-German project “Environmental benefits of the Mahatma Gandhi National Rural Employment Guarantee Act (MGNREGA-EB)” aimed at contributing to the improvement of livelihood resource base of the rural economy by promoting conservation, replenishment and sustainable use of natural resources.

New strategy of Chhattisgarh Government focuses on comprehensive village development plan which had been developed under IPPE-II. It includes all aspects of the village development like skill development; watershed, drinking water, sanitation, livelihood etc. Moreover, it also incorporates issues of social justice and inclusion of the marginalized sections through MGNREGS and other schemes. The purpose of this intervention was to provide the help to Panchayats for developing participatory plans and to pursue its implementation through convergence with the other departments and schemes.

The approach promotes participatory processes within the Panchayats and make change in system at JP and ZP level so that MGNREGS work could be implemented according the comprehensive plan developed by GP and ensured livelihood promotion through sustainable intervention on natural resources like water, soil, forests etc. Programme planning suggests a chain of actions starting with rapport building with people, capacity building of GP/ Gram Sabha, participatory planning, designing, building community organizations, participatory implementation and monitoring.

2. Project Objectives

The interpretation of the objectives are drawn from the TOR document, which details the GIZ AND MORD's agreement on the MGNREGS on environmental benefit. In April 2013, GIZ and MoRD have commissioned a five year joint project "Environmental benefits through Mahatma Gandhi National Rural Employment Guarantee Act (MGNREGA-EB). The objective of MGNREGA-EB is high quality implement MGNREGS works while integrating environmental benefit in the commissioned projects. Thus the focus of the projects is Natural resource management through MGNREGS, whereby community and Panchayats understand the environmental issues and integrate them implementation of the MGNREGS. It also involves strengthening the technical capacities of the Panchayats to commission technically sound structures. The GIZ and MORD have jointly worked out the indicators to measure the resulting project objectives such as , Gram Sabha's in 75% of demonstration sites have selected the SOPs (shelf of projects) based on integrated NRM planning approaches and larger women participation. The project has special focus on the ensuring quality and environmental impact of the assets created, and therefore promotes appropriate monitoring and evaluation systems. The project also emphasis on innovative design in the structures that can lead to environmental benefits such as increase in soil moisture content, on water harvesting. Overall, the project operates at the local, state and national level and envisages developing environmental benefit (EB) models under MGNREGA framework by providing the following support- Information, education, communication

- Support in Technical designing and guidelines of MGNREGA works
 - Process support in building mechanism for profit sharing and maintenance of assets
 - Monitoring of environmental and gender effects
 - Capacity development of the Panchayat, mates, user groups and Gram Sabha in the above aspects
- To build the capacities of technical staff of 5 blocks(other than ICRG)/Water deficit block in the Rajnandgaon district for the micro watershed approach/MWC

- To Develop climate resilience Livelihood based model of Drainage line treatment while enhancing the agriculture interventions in the project 13 GPs
- To establish one Mate school in all 6 block of Rajnadgaon district
- District and State level learning Sharing workshop (Jointly with other GIZ partner)
- Knowledge Products (Jointly with other GIZ partner) for Technical backstopping and knowledge management

3. Key Accomplishments

- Community started NRM planning through MGNREGA
- GPs strengthened to plan and implement EB works
- 6000 hectares of land to be covered agriculture
- 13 GP DPR through GIS
- 165 EB structures got approval in 13 GPs
- 177000 Plus Man-days under MGNREGA provided employment to active job card holders for five months during 2016-17 and 2017-18.
- 57827 Cubic Meters land Soil erosion checked
- 1 MATE School established and 22 Women MATEs got trained in 1st batch
- 1 SOP on DLT works has been developed
- Supported and coordinated in organizing state level learning & sharing workshop at Raipur C.G. on 24th March 2018



4. Major Impacts

SOCIAL

- Increased more than 20 percent participation of women and other marginal sections (planning process, Gram Sabha and worksites)
- Farmers as a user group strengthened for the maintenance of the structure respectively.
- Community based organization like SHGs and Youth Group emerged and taking the responsibility of village development.
- Now villages have their own picnic spot and demonstration cum learning site for the district on EB works in future.

INSTITUTIONAL

- 87 Water user groups/11 user committees formed
- It changed the mentality of the village community and forced them to make their best participation in the GPDP planning process as result of that largest number of EB works are identified in financial year 2017-18.
- Now, 40-45 skilled & trained persons are available to do EB works at village and ready to extend their support nearby villages.
- Enhanced capacity of farmer groups for the EB works and after rainy season demand of EB works going to get the momentum with community participation.
- Durable assets created and providing irrigation water to the adjoining farmers or User group.

ENVIRONMENTAL

- The rate of soil erosion is comparatively heavy in loamy soil; 37 Gabion, 20 LBS, 30 Stop Dam and 8 Stop Dam Rapta will also minimize and arrest the soil erosion from 57827 CUM area and also in drainage line to great extent.
- Accumulated eroded soil in drainage line structure, further will be used by user group for their land which will improve soil texture of their land.
- Farmers will take advantage of increased water table of their wells for cultivating crops during Rabi and Kharif.
- Ground water will be recharged
- It has also increased vegetation in Rabi season

AGRICULTURE AND LIVELIHOOD

- 373 farmers will get assured irrigation for Kharif & Rabi crops.
- Increased production will increase the income.
- This will also create agricultural employment opportunities in the villages.
- Engage labor force for repairing and maintenance for future livelihoods.
- It will help to grow fodder crop on bunds, which gives additional benefits to the beneficiary household from livestock development, reduce cost of fodder purchasing and Enhance milk production and serve as a supplementary livelihood source for the farmers.

5. Key steps followed for collective action & institution building for Environmental benefit works under MGNREGA

5.1. Identification of community leaders: Potential community leaders in 13 Gram Panchayats and village level community resource person were identified for developing community level resource pool of change makers. These resource groups consisting of community leaders are acting as multiplier for the program and boosting the community engagements in overall process.

5.2. Exposure visit of external MATEs/ PRIS and Technical Assistants: Training of technical team and cross learning is essential and hence many external visitors came to the project villages are as listed below:

| Sl. | Name of Project/Nala | Visitors from the Block | Visitors from the villages | Participants | | |
|-----|-----------------------------------|--|----------------------------|-----------------------|-----|-----|
| | | | | PRI/Committee Members | GRS | TAs |
| 1 | Bhagwantola Nala | Mohla | 6 | 45 | 4 | 5 |
| 2 | Salhe kosumkasa Nala | A. Chowki | 10 | 95 | 5 | 5 |
| 3 | Kulhuri Nala (Lower Part) | Khairagarh | 8 | 50 | 4 | 5 |
| 4 | Ghumariya Nala | Chhuria | 16 | 90 | 5 | 5 |
| 5 | Chhipa Nala | Dongargaon | 10 | 72 | 5 | 5 |
| 6 | Other 8 districts of Chhattisgarh | Kawarha, Mungeli, Bilaspur, Sarguja, Surajpur, Jashpur, Koriya | | 82 | | |

Following are the envisaged area for capacity building and hand-holding support-
Technical support for implementation of MGNREGA works during the visits:

- Preparation of the DPR at one GP of each block
- Identification of the Key support person for work

- Review of labor budget of the MGNREGS
- Technical support to PRI/Mate for site selection lay out
- Technical and hand holding support at work site
- Planning with Gram Sabha and Panchayat for the Implementation of the plan
- Record keeping and reporting at GPs
- MIS and data entry in MGNREGS web-portal
- Support in Coordination with BLOCK GP and department

5.3. Technical support: PRI members and implementation team at field level needs technical support on following tasks:

- Layout and site selection
- Determining whether manual or mechanical digging is required
- Measuring progress status of works: measurement tool kits can be availed for the tasks which will be kept safely in a public building.
- Laborers need to be trained at work sites about getting bigger environmental benefits to them through these initiatives.
- Onsite stock maintenance requirement
- Lease sites for material dumping
- Part evaluation, FTO and fund release: coordination meetings with Gram Panchayat, Janpad Panchayat and Zila Panchayat were required for the same. Part payment to the supplier can also ensure hassle free supply of materials as vendors got their payment on regular intervals.
- Shift wise work plan development: works can be conducted in multiple shifts to ensure timely completion. (i.e. 6 AM to 2 PM and 2 PM to 7 PM)
- Gender based work distribution: works should be distributed based on capacity of workers. For example: women workers should be allotted digging work while men workers can be allotted heavy & load carrying work for proper work distribution.

- Placing appropriate mates at right places: MATEs need to be placed based upon their expertise & interest for getting full performance.
- Scheduling of works: work should be scheduled properly with consideration of material availability, land type and environmental conditions.
- GIS based INRM plan of 13 Gram Panchayat is also developed during the project period.

5. 4. Ensuring Transparency in the process: Transparency is the key for community engagements and developing confidence of the community. Transparency in the project is maintained at different level through following process:

- Material supply from multiple vendors
- Monthly review at higher level: regular review about the sanctioning of work, payment and evaluation process through regular field visits from officials at higher level and monthly review meeting at Panchayat level need to be ensured.
- Notice boards need to be installed at worksites
- Communication through social media can be also beneficial for ensuring the transparency.

Example says: WhatsApp group of key stakeholders & community members was created as 'ParyavaranPariyojana Gram' (Environment Project Village). This group has added officials at district and block levels, Technical Assistants, Gram Panchayat Sarpanch, Secretary, Mate and others. The key benefits of this group was:

- Daily work progress review on real-time
- Problems identification by community level
- Guidance, advice and immediate response received from concerned official & line department on real-time
- Work photographs were update in real-time and shared with all stakeholders very quickly



5.5. Community level interventions for capacity building and stake holder

sensitization: Engaging community and gaining their confidence through capacity building & sensitization is very important for any socio-economic developmental works. This has been done with participatory ways as listed below:

- I. **Ground water data analysis done in 11 G.P:** this includes knowledge sharing and awareness of community on the status of ground water level.
- II. **Training on climate change:** 1 training done at district level and many village meeting conducted on climate change. Outcomes of such exercise will help in planning process of Gram Panchayat which will reflect inclusion of more number of EB works.

The major points discussed in the training were:

- Process of building knowledge about the livelihood resources in the area.
- How to facilitate understanding of climate change and its manifestations for rural community.
- To build matrix of climate change induced weather variability and its effect on key livelihood activities.
- Process of assessing different development activities against climate change.
- How agro-forestry and trees can be useful in building community resilience against climate change.
- What are the information/data important for developing knowledge (exposure, sensitivity, adaptive capacity) of an area/village?
- Different tools to understand climate change related information at village level such as transect walk, Focus Group Discussion, Hard Mapping, and Seasonal Calendar.
- How to consolidate data for developing a climate smart GPDP.
- Steps and component of main streaming climate proofing initiatives into GPDP.

- III. **Participation of community in Gram Sabhas:** Community in the project villages were motivated for attending Gram Sabhas and raise their concerns about EB works. 20 village of 13 GP. All of them have also participated in Gram Swaraj Abhiyan 2018.
- IV. **Strengthening of SHGs:** SHG members of 65 SHGs in 20 villages were motivated to participate in the planning process.
- V. **Participation of PRI members, Mates and farmers in the planning process:** All PRI members, 45 Mates and farmers from 87 Farmers Club (Water User Group) from 13 G.P has participated in different platforms and shown their active involvement during the planning & implementation phase. Planning done in the aspects related to ground water recharging and improving ratio of agricultural land & productivity.
- VI. **Stakeholder sensitization:** stakeholder sensitization done through village meetings & Water user group meetings on the issues of natural resources, environmental vulnerabilities and need for effective planning. All the 13 GP are now maintaining records on climate change at Panchayat level.
- VII. **Explained benefits of new structures to community:** project proposal and works plans explained clearly to community in local language. Also shared rationale behind selection of structures and environmental, economic and social benefits through them.

5.6. Gram Panchayat level interventions to sensitize and motivate towards undertaking environmental benefit works instead of construction works:

- Gram Panchayats were sensitized to take more number of environmental benefit related works apart from construction works.
- Capacity of Gram Panchayats enhanced for taking watershed & environmental benefits related works. This has increase the percentage of total works approved in DPR implemented by 13 Gram Panchayat.
- Mates were also oriented at PRI meetings for increasing their confidence in taking up such works.
- PRI members were oriented and motivated for increased transparency in works done by Gram Panchayats.

5.7. Coordination with government departments: Two Block and District level Trainings organized for functionaries of MGNREGA at Gram Panchayat, Janpad Panchayat and Zila Panchayat level.

- Series of regular meeting conducted with line departments for implementation of 17 works above Rs. 20 Lakh.
- Glitches at departmental levels like delay in issuing land maps and khasras etc. for 6 works were addressed with appropriate coordination.
- Works were appropriately allocated to Technical Assistants under MGNREGA to reduce the workload and maximize their effectiveness in 13 G.P.
- Appropriate agencies were determined for works which were beyond sanctioned limits of Gram Panchayats (20 lakh) which were Water Resource Department and Rural Engineering Services Department etc.

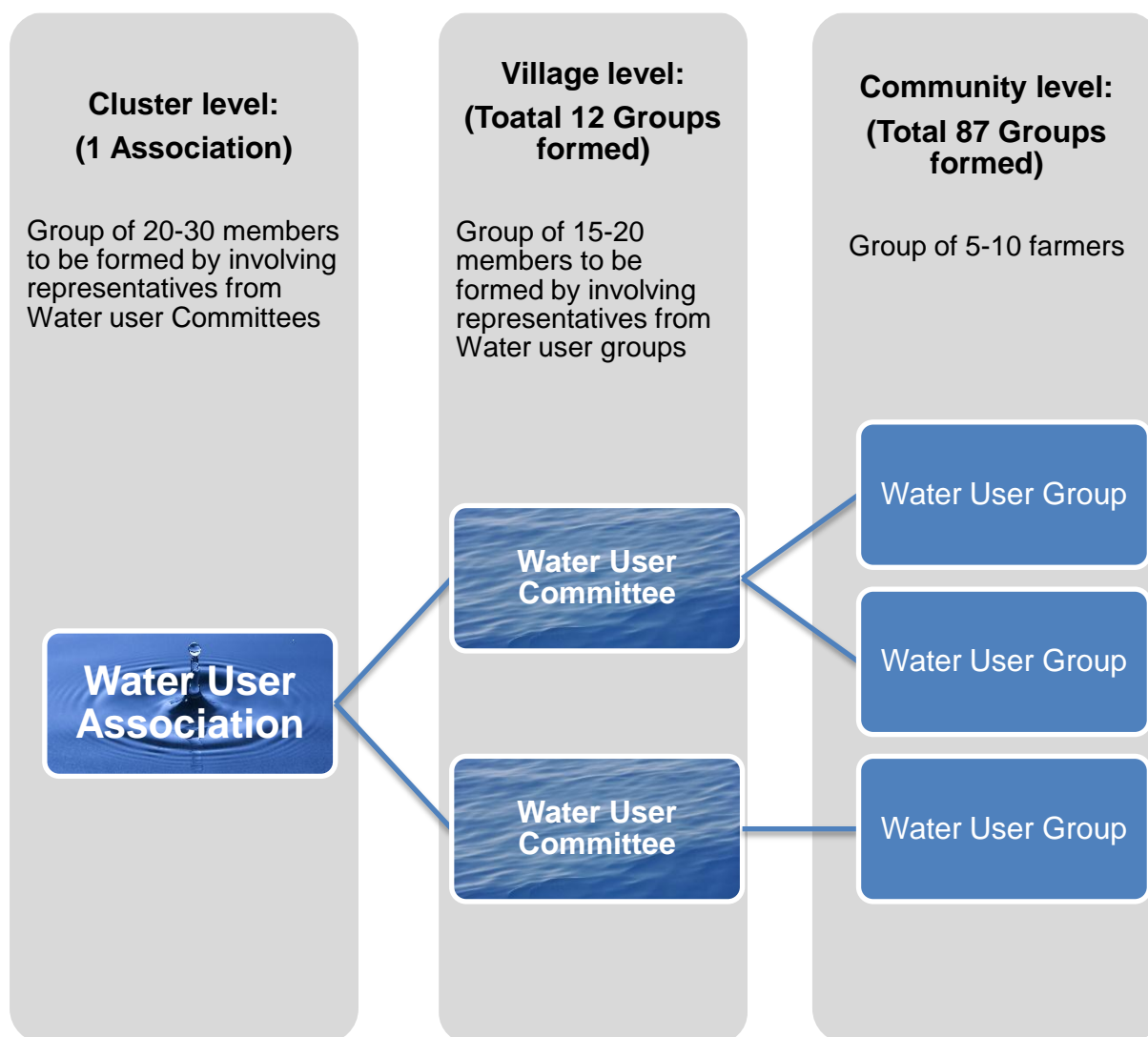
6. Sustainability and Maintenance

Sustainability and maintenance of environmental benefit works cannot be sustained without community participation. The primary user will be the community and they are more connected with the projects and hence they will be the primary stakeholders for its success. Therefore community level sustainability and maintenance process should be followed by the user groups. The user group's process flow is as depicted below:



6.1. Water user group (Formation of user groups and their capacity building)

Structure wise 87 user groups were formed and they are getting proper capacity building and handholding support. List of members of these groups were getting approved by Gram Sabha. They should be the members of the villages and their land should be connected to the watershed structures. They were capacitated time to time about their roles and responsibilities. From the beginning they were well explained through the satellite imagery during developing resource maps and they were involved in field visits.



6.2. Monitoring of project sites: From the beginning they were involved in monitoring of work progress near to their farm land. So that they will ensure quality work and motivated for its sustainability through participatory ways.

6.2. Maintenance: There are formal agreements between members of user groups and Panchayats which mentioned clauses of handing over process and regular maintenance of new structures as per their capacities during emergency situation before taking help from Panchayats or line departments.



6.2. Water distribution Plan: equal distribution of water among farmers were ensured through common agreement. So that, all the farmers should get water during the time of need without any discrepancies.

6.2. Exposure visit of group leaders and volunteers- As a confidence building program, exposure visit were organized for group leaders of labor group and mates as a part of the on site training in different villages which provided opportunity to them to see the community initiatives in the neighboring areas and motivated do best work in their respective villages and group leader and PRI member. Technical assistant were also made exposure visit to Nasik for understanding of the PIM work.

Kindly refer Annexure-1 for: Physical Progress Report of Demonstration Site for Month April 2018 under MoRD-GIZ Project (MGNREGA/PMKSY) in Dongargarh, Rajnandgaon.



Annexure- 1

PHYSICAL PROGRESS REPORT OF DEMONSTRATION SITE FOR MONTH APRIL 2018 MoRD-GIZ Project (MGNREGA/PMKSY)

JANPAD PANCHAYAT- DONGARGARH, DIST-RAJNANDGAON

| S. no | Name of Work | Village Name | Sanctioned Amount | | | Expenditure As Per Sanction | | | Implementation Agency | Physical Status |
|-------|--------------------|--------------|-------------------|----------|---------|-----------------------------|----------|---------|-----------------------|----------------------|
| | | | Labor | Material | Total | Labor | Material | Total | | |
| 1 | G.S. 1 | Sivnikala | 55100 | 170700 | 225800 | 41084 | 129177 | 170261 | GRAM PANCHAYAT | COMPLETE |
| 2 | G.S. 2 | Sivnikala | 43700 | 135100 | 178800 | 42688 | 123500 | 166188 | GRAM PANCHAYAT | COMPLETE |
| 3 | G.S. 3 | Sivnikala | 43700 | 135100 | 178800 | 43570 | 117210 | 160780 | GRAM PANCHAYAT | COMPLETE |
| 4 | G.S. 4 | Sivnikala | 52200 | 161800 | 214000 | 52830 | 145694 | 198524 | GRAM PANCHAYAT | COMPLETE |
| 5 | G.S. 5 | Sivnikala | 52200 | 161800 | 214000 | 48647 | 149600 | 198247 | GRAM PANCHAYAT | COMPLETE |
| 6 | Stop Dam Rapta 1 | Sivnikala | 796500 | 3853000 | 4649500 | 514000 | 3140000 | 3654000 | WRD | Incomplete |
| 7 | Stop Dam Rapta 2 | Sivnikala | 796500 | 3885100 | 4681600 | 522000 | 2922000 | 3444000 | WRD | Incomplete |
| 8 | B.W.R.(ishwar) | Sivnikala | 4300 | 24100 | 28400 | 4240 | 22900 | 27140 | GRAM PANCHAYAT | COMPLETE |
| 9 | B.W.R.(devnath) | Sivnikala | 4300 | 24100 | 28400 | – | – | | GRAM PANCHAYAT | Cancelled |
| 10 | B.W.R.(ramhin) | Sivnikala | 4300 | 24100 | 28400 | – | – | | GRAM PANCHAYAT | Cancelled |
| 11 | B.W.R.(sukhcharan) | Sivnikala | 4300 | 24100 | 28400 | – | – | | GRAM PANCHAYAT | Cancelled |
| 12 | FORM POND | Sivnikala | 127000 | 33000 | 160000 | 104709 | – | 104709 | GRAM PANCHAYAT | COMPLETE |
| 13 | FORM POND | Sivnikala | 127000 | 33000 | 160000 | 121546 | – | 121546 | GRAM PANCHAYAT | COMPLETE |
| 14 | FORM POND | Sivnikala | 121500 | 6200 | 127700 | 118570 | – | 118570 | GRAM PANCHAYAT | COMPLETE |
| 15 | FORM POND | Sivnikala | 121500 | 6200 | 127700 | 119238 | – | 119238 | GRAM PANCHAYAT | COMPLETE |
| 16 | Stopdam 1 | Khairbana | 295900 | 1405000 | 1700900 | 239334 | – | 239334 | GRAM PANCHAYAT | Partially Incomplete |
| 17 | Stopdam 3 | Khairbana | 295900 | 1405000 | 1700900 | 282576 | – | 282576 | GRAM PANCHAYAT | Partially Incomplete |
| 18 | Stop Dam Rapta | Khairbana | 790600 | 3915000 | 4705600 | 725000 | 2970000 | 3695000 | WRD | Partially Incomplete |
| 19 | B.C. Dam 1 | Bijnapur | 41000 | 94000 | 135000 | 32231 | 77200 | 109431 | GRAM PANCHAYAT | COMPLETE |
| 20 | B.C. Dam 2 | Bijnapur | 41000 | 94000 | 135000 | 37274 | 77200 | 114474 | GRAM PANCHAYAT | COMPLETE |
| 21 | B.C. Dam 3 | Bijnapur | 50000 | 115000 | 165000 | 41082 | 94600 | 135682 | GRAM PANCHAYAT | COMPLETE |
| 22 | B.C. Dam 4 | Bijnapur | 43900 | 101100 | 145000 | 30227 | 85900 | 116127 | GRAM PANCHAYAT | COMPLETE |
| 23 | B.C. Dam 5 | Bijnapur | 62100 | 142700 | 204800 | 28263 | 90000 | 118263 | GRAM PANCHAYAT | COMPLETE |
| 24 | B.C. Dam 6 | Bijnapur | 68200 | 156600 | 224800 | 36573 | 97000 | 133573 | GRAM PANCHAYAT | COMPLETE |

| | | | | | | | | | | |
|----|---------------|----------------------|--------|---------|-------------|--------|---------|-------------|----------------|-----------|
| 25 | B.W.R.(sufal) | Bijnapur | 4300 | 24100 | 28400 | 4240 | 22900 | 27140 | GRAM PANCHAYAT | COMPLETE |
| 26 | B.W.R.(rikhi) | Bijnapur | 4300 | 24100 | 28400 | 4240 | 22900 | 27140 | GRAM PANCHAYAT | COMPLETE |
| 27 | B.W.R.(mannu) | Bijnapur | 4300 | 24100 | 28400 | 4240 | 22900 | 27140 | GRAM PANCHAYAT | COMPLETE |
| 28 | BWR(omkar) | Bijnapur | 4300 | 24100 | 28400 | 4240 | 22900 | 27140 | GRAM PANCHAYAT | COMPLETE |
| 29 | G.S. 1 | Bijnapur | 52200 | 161800 | 214000 | 55778 | 145500 | 201278 | GRAM PANCHAYAT | COMPLETE |
| 30 | G.S. 2 | Bijnapur | 58000 | 169700 | 227700 | 55201 | 173207 | 228408 | GRAM PANCHAYAT | COMPLETE |
| 31 | G.S. 3 | Bijnapur | 58000 | 169700 | 227700 | 55778 | 98451 | 154229 | GRAM PANCHAYAT | COMPLETE |
| 32 | B.C. Dam 1 | Bijnapur | 23800 | 40000 | 63800 | 22532 | 34900 | 57432 | GRAM PANCHAYAT | COMPLETE |
| 33 | B.C. Dam 2 | Bijnapur | 20000 | 34600 | 54600 | 19092 | – | 19092 | GRAM PANCHAYAT | COMPLETE |
| 34 | B.C. Dam 3 | Bijnapur | 22500 | 38800 | 61300 | 20640 | – | 20640 | GRAM PANCHAYAT | COMPLETE |
| 35 | B.C. Dam 4 | Bijnapur | 20000 | 34600 | 54600 | 19952 | – | 19952 | GRAM PANCHAYAT | COMPLETE |
| 36 | B.C. Dam 5 | Bijnapur | 23800 | 40000 | 63800 | 24080 | 34900 | 58980 | GRAM PANCHAYAT | COMPLETE |
| 37 | FORM POND | Bijnapur | 127000 | 33000 | 160000 | 123246 | – | 123246 | GRAM PANCHAYAT | COMPLETE |
| 38 | FORM POND | Bijnapur | 127000 | 33000 | 160000 | 126419 | – | 126419 | GRAM PANCHAYAT | COMPLETE |
| 39 | Pond | Bijnapur | 527700 | 21300 | 549000 | 38744 | – | 38744 | GRAM PANCHAYAT | COMPLETE |
| 40 | Stop Dam | Bijnapur | 222700 | 1155500 | 137820 0 | – | – | | GRAM PANCHAYAT | Cancelled |
| 41 | Stop Dam | Palandur | 314300 | 1638400 | 195270 0 | 279629 | 4572536 | 485216 5 | GRAM PANCHAYAT | COMPLETE |
| 42 | Stop Dam | Palandur | 310100 | 1567200 | 187730 0 | 275030 | 750733 | 102576 3 | GRAM PANCHAYAT | COMPLETE |
| 43 | Stop Dam | Palandur | 300800 | 1567200 | 186800 0 | 243036 | 52999 | 296035 | GRAM PANCHAYAT | COMPLETE |
| 44 | Stop Dam | Palandur | 306000 | 1592000 | 189800 0 | 292782 | 521979 | 814761 | GRAM PANCHAYAT | COMPLETE |
| 45 | Gabian | Palandur | 52200 | 161800 | 214000 | 5159 | 160107 | 165266 | GRAM PANCHAYAT | COMPLETE |
| 46 | Gabian | Palandur | 52200 | 161800 | 214000 | 51076 | 138442 | 189518 | GRAM PANCHAYAT | COMPLETE |
| 47 | Gabian | Palandur | 52200 | 161800 | 214000 | 54966 | 141084 | 196050 | GRAM PANCHAYAT | COMPLETE |
| 48 | Gabian | Palandur | 52200 | 161800 | 214000 | 59794 | 137453 | 197247 | GRAM PANCHAYAT | COMPLETE |
| 49 | B.W.R. | Palandur | 4300 | 24100 | 28400 | – | – | | GRAM PANCHAYAT | Cancelled |
| 50 | B.W.R. | Palandur | 4300 | 24100 | 28400 | – | – | | GRAM PANCHAYAT | Cancelled |
| 51 | FORM POND | Palandur | 127000 | 33000 | 160000 | 125132 | – | 125132 | GRAM PANCHAYAT | COMPLETE |
| 52 | FORM POND | Palandur | 127000 | 33000 | 160000 | 126420 | – | 126420 | GRAM PANCHAYAT | COMPLETE |
| 53 | FORM POND | Palandur | 127000 | 33000 | 160000 | 126420 | – | 126420 | GRAM PANCHAYAT | COMPLETE |
| 54 | FORM POND | Palandur | 127000 | 33000 | 160000 | – | – | | GRAM PANCHAYAT | Cancelled |
| 55 | form Pond | Jarwahi/saha spur | 127000 | 33000 | 160000 | 126561 | – | 126561 | GRAM PANCHAYAT | COMPLETE |
| 56 | Gabian | Jarwahi/saha spur | 52200 | 161800 | 214000 | 46529 | 67464 | 113993 | GRAM PANCHAYAT | COMPLETE |
| 57 | Gabian | Jarwahi/saha spur | 46500 | 144000 | 190500 | 46319 | 122100 | 168419 | GRAM PANCHAYAT | COMPLETE |

| | | | | | | | | | | |
|----|--------------------|-------------------|--------|---------|---------|--------|---------|---------|----------------|------------|
| 58 | Gabian | Jarwahi/saha spur | 52200 | 161800 | 214000 | 56874 | 149126 | 206000 | GRAM PANCHAYAT | COMPLETE |
| 59 | LBS | Jarwahi/saha spur | 17300 | 26700 | 44000 | 18177 | | 18177 | GRAM PANCHAYAT | COMPLETE |
| 60 | LBS | Jarwahi/saha spur | 16000 | 25000 | 41000 | 15916 | 24000 | 39916 | GRAM PANCHAYAT | COMPLETE |
| 61 | Stopdam | Jarwahi/saha spur | 198600 | 1011000 | 1209600 | 1210 | | 1210 | GRAM PANCHAYAT | Incomplete |
| 62 | Form pond(suresh) | Jarwahi/saha spur | 127000 | 33000 | 160000 | 126561 | | 126561 | GRAM PANCHAYAT | COMPLETE |
| 63 | Form pond(Ravi) | Jarwahi/saha spur | 127000 | 33000 | 160000 | 125921 | | 125921 | GRAM PANCHAYAT | COMPLETE |
| 64 | Stop Dam + Rapata | Thakurtola | 761800 | 3940200 | 4702000 | 698836 | 3935783 | 4634619 | RES | COMPLETE |
| 65 | Stop Dam | Thakurtola | 300800 | 1567500 | 1868300 | 315137 | 913142 | 1228279 | GRAM PANCHAYAT | Incomplete |
| 66 | Stop Dam | Thakurtola | 306200 | 1592000 | 1898200 | 347775 | 885409 | 1233184 | GRAM PANCHAYAT | Incomplete |
| 67 | Gabian | Thakurtola | 55100 | 170700 | 225800 | 53941 | 16084 | 70025 | GRAM PANCHAYAT | COMPLETE |
| 68 | Gabian | Thakurtola | 75100 | 232900 | 308000 | 7659 | 225269 | 232928 | GRAM PANCHAYAT | COMPLETE |
| 69 | Gabian | Thakurtola | 52200 | 161800 | 214000 | 51436 | 156700 | 208136 | GRAM PANCHAYAT | COMPLETE |
| 70 | Gabian | Thakurtola | 52200 | 161800 | 214000 | 51269 | 155702 | 206971 | GRAM PANCHAYAT | COMPLETE |
| 71 | FORM POND | Thakurtola | 127000 | 33000 | 160000 | 89846 | | 89846 | GRAM PANCHAYAT | COMPLETE |
| 72 | FORM POND | Thakurtola | 127000 | 33000 | 160000 | 126402 | | 126402 | GRAM PANCHAYAT | COMPLETE |
| 73 | FORM POND | Thakurtola | 127000 | 33000 | 160000 | 125879 | | 125879 | GRAM PANCHAYAT | COMPLETE |
| 74 | Stopdam 1 | Jhandatalab | 296500 | 1592200 | 1888700 | 203767 | 612996 | 816763 | GRAM PANCHAYAT | COMPLETE |
| 75 | Stopdam 2 | Jhandatalab | 296500 | 1592200 | 1888700 | 224000 | 772000 | 996000 | GRAM PANCHAYAT | COMPLETE |
| 76 | Stopdam 3 | Jhandatalab | 296500 | 1592200 | 1888700 | 247896 | 423610 | 671506 | GRAM PANCHAYAT | COMPLETE |
| 77 | G.S. 1 | Jhandatalab | 52200 | 14800 | 67000 | 48096 | 160500 | 208596 | GRAM PANCHAYAT | COMPLETE |
| 78 | G.S. 2 | Jhandatalab | 75100 | 179700 | 254800 | 52030 | 177798 | 229828 | GRAM PANCHAYAT | COMPLETE |
| 79 | B.W.R.(fatte) | Jhandatalab | 4300 | 24100 | 28400 | - | - | | GRAM PANCHAYAT | Cancelled |
| 80 | B.W.R.(Gopi) | Jhandatalab | 4300 | 24100 | 28400 | - | - | | GRAM PANCHAYAT | Cancelled |
| 81 | B.W.R.(Santram) | Jhandatalab | 4300 | 24100 | 28400 | - | - | | GRAM PANCHAYAT | Cancelled |
| 82 | B.W.R.(Jahjit) | Jhandatalab | 4300 | 24100 | 28400 | - | - | | GRAM PANCHAYAT | Cancelled |
| 83 | FORM POND(bhisham) | Jhandatalab | 102400 | 9600 | 112000 | 130427 | 13200 | 143627 | GRAM PANCHAYAT | COMPLETE |
| 84 | FORM POND | Jhandatalab | 127000 | 33000 | 160000 | 115230 | 13200 | 128430 | GRAM PANCHAYAT | COMPLETE |
| 85 | FORM POND | Jhandatalab | 127000 | 33000 | 160000 | 115397 | - | 115397 | GRAM PANCHAYAT | COMPLETE |
| 86 | FORM POND | Jhandatalab | 127000 | 33000 | 160000 | 100792 | - | 100792 | GRAM PANCHAYAT | COMPLETE |
| 87 | Pond (tank k baju) | Jhandatalab | 953400 | 35200 | 988600 | 872470 | - | 872470 | GRAM PANCHAYAT | COMPLETE |
| 88 | Pond (Sanbora) | Jhandatalab | 953400 | 35200 | 988600 | 432302 | - | 432302 | GRAM PANCHAYAT | COMPLETE |
| 89 | Stopdam Cum Rapta | Jhandatalab | | | | | - | | WRD | COMPLETE |
| 90 | Stop Dam + Rapata | Chhipa | 817700 | 4122200 | 4939900 | 729796 | 3215579 | 3945375 | RES | Incomplete |



| | | | | | | | | | | |
|-----|----------------------------|------------|-------------|---------|-------------|-------------|--------------|-------------|----------------|----------------------|
| 91 | Stop Dam | Chhipa | 300800 | 1567200 | 186800 0 | 235964 | 626287 | 862251 | GRAM PANCHAYAT | Partially Incomplete |
| 92 | Stop Dam | Chhipa | 300800 | 1567200 | 186800 0 | 376410 4 | 1082053 9 | 0 | GRAM PANCHAYAT | Incomplete |
| 93 | Stop Dam | Chhipa | 930600 | 3233100 | 416370 0 | 100215 6 | 3207975 | 421013 1 | RES | Partially Incomplete |
| 94 | Stop Dam | Chhipa | 997000 | 3306300 | 430330 0 | 900592 | 2495098 | 339569 0 | RES | Partially Incomplete |
| 95 | Gabian | Chhipa | 103700 | 322300 | 426000 | 44923 | 270000 | 314923 | GRAM PANCHAYAT | COMPLETE |
| 96 | Gabian | Chhipa | 89400 | 277600 | 367000 | 76755 | 128513 | 205268 | GRAM PANCHAYAT | COMPLETE |
| 97 | Gabian | Chhipa | 52200 | 161800 | 214000 | 1867 | | 1867 | GRAM PANCHAYAT | Incomplete |
| 98 | Gabian | Chhipa | 75100 | 232900 | 308000 | 2505 | | 2505 | GRAM PANCHAYAT | Incomplete |
| 99 | FORM POND | Chhipa | 127000 | 33000 | 160000 | | | | GRAM PANCHAYAT | Cancelled |
| 100 | FORM POND | Chhipa | 127000 | 3000 | 130000 | | | 0 | GRAM PANCHAYAT | Cancelled |
| 101 | Stop Dam | Dodki | 106910 0 | 3614100 | 468320 0 | 104249 2 | 3479413 | 452190 5 | RES | Partially Incomplete |
| 102 | Stop Dam | Dodki | 104930 0 | 3678900 | 472820 0 | 362758 1 | 1037720 | 466530 1 | RES | Partially Incomplete |
| 103 | Stop Dam+ Desilting+Rapata | Dodki | 797400 | 4106800 | 490420 0 | 700040 | 3978076 | 467811 6 | RES | Incomplete |
| 104 | Gabian | Dodki | 37900 | 117100 | 155000 | 38779 | 113820 | 152599 | GRAM PANCHAYAT | COMPLETE |
| 105 | LBS | Dodki | 15900 | 25100 | 41000 | | | | GRAM PANCHAYAT | Partially Incomplete |
| 106 | LBS | Dodki | 15900 | 25100 | 41000 | | | | GRAM PANCHAYAT | Partially Incomplete |
| 107 | Stop Dam + Rapata | saltikri | 757400 | 3736800 | 449420 0 | 992537 | 2787873 | 378041 0 | RES | Partially Incomplete |
| 108 | Stop Dam | saltikri | 300800 | 1567200 | 186800 0 | 299014 | 626197 | 925211 | GRAM PANCHAYAT | Partially Incomplete |
| 109 | Stop Dam | saltikri | 300800 | 1567200 | 186800 0 | 301911 | 469638 | 771549 | GRAM PANCHAYAT | Partially Incomplete |
| 110 | Gabian | saltikri | 522000 | 161800 | 683800 | 59438 | 144363 | 203801 | GRAM PANCHAYAT | COMPLETE |
| 111 | Renovation Form Pond | saltikri | 996000 | – | 996000 | | | | GRAM PANCHAYAT | Incomplete |
| 112 | LBS | saltikri | 24800 | 37200 | 62000 | 19092 | | 19092 | GRAM PANCHAYAT | Incomplete |
| 113 | LBS | saltikri | 24800 | 37200 | 62000 | 15824 | | 15824 | GRAM PANCHAYAT | Incomplete |
| 114 | BWR(shivlal) | saltikri | 4300 | 24100 | 28400 | | | | GRAM PANCHAYAT | Cancelled |
| 115 | BWR(Lalta) | saltikri | 4300 | 24100 | 28400 | | | 0 | GRAM PANCHAYAT | Cancelled |
| 116 | Form Pond | Basantpur | 127000 | 33000 | 160000 | 128310 | | 128310 | GRAM PANCHAYAT | COMPLETE |
| 117 | Form Pond | Basantpur | 127000 | 33000 | 160000 | | | | GRAM PANCHAYAT | Cancelled |
| 118 | Stop Dam | Kolihapuri | 103560 0 | 3447500 | 448310 0 | 977648 | 3436491 | 441413 9 | RES | Partially Incomplete |
| 119 | Stop Dam | Kolihapuri | 103080 0 | 3658300 | 468910 0 | 973692 | 3641730 | 461542 2 | RES | Partially Incomplete |
| 120 | Stop Dam | Kolihapuri | 300800 | 1567200 | 186800 0 | 64275 | 173900 | 238175 | GRAM PANCHAYAT | Partially Incomplete |
| 121 | Gabian | Kolihapuri | 58000 | 179700 | 237700 | 59884 | | 59884 | GRAM PANCHAYAT | COMPLETE |
| 122 | Gabian | Kolihapuri | 58000 | 179700 | 237700 | 63165 | 226400 | 289565 | GRAM PANCHAYAT | COMPLETE |

| | | | | | | | | | | |
|-----|--------------------------|------------|---------|---------|---------|---------|---------|---------|----------------|----------------------|
| 123 | Gabian | Kolihapuri | 58000 | 179700 | 237700 | 43888 | | 43888 | GRAM PANCHAYAT | COMPLETE |
| 124 | Gabian | Kolihapuri | 75100 | 232900 | 308000 | | | | GRAM PANCHAYAT | COMPLETE |
| 125 | Gabian | Kolihapuri | 66000 | 206400 | 272400 | | | | GRAM PANCHAYAT | COMPLETE |
| 126 | Stop Dam | Gadabhawar | 272800 | 1415200 | 1688000 | 203443 | | 203443 | GRAM PANCHAYAT | Partially Incomplete |
| 127 | Gabian | Gadabhawar | 69400 | 215300 | 284700 | 63165 | 226400 | 289565 | GRAM PANCHAYAT | COMPLETE |
| 128 | Form Pond | Gadabhawar | 853900 | 35700 | 889600 | 632845 | | 632845 | GRAM PANCHAYAT | COMPLETE |
| 129 | LBS | Gadabhawar | 19800 | 30200 | 50000 | 19655 | | 19655 | GRAM PANCHAYAT | COMPLETE |
| 130 | LBS | Gadabhawar | 19800 | 30200 | 50000 | 17641 | | 17641 | GRAM PANCHAYAT | COMPLETE |
| 131 | LBS | Gadabhawar | 19800 | 30200 | 50000 | 8425 | | 8425 | GRAM PANCHAYAT | COMPLETE |
| 132 | Pond | Gadabhawar | 1540100 | 54500 | 1594600 | 632845 | | 632845 | GRAM PANCHAYAT | COMPLETE |
| 133 | Pond | Gadabhawar | 178000 | 13500 | 191500 | 181364 | | 181364 | GRAM PANCHAYAT | COMPLETE |
| 134 | Stop Dam | Saloni | 2160600 | 1604500 | 3765100 | 1024000 | 1251000 | 2275000 | WRD | Partially Incomplete |
| 135 | Stop Dam | Saloni | 2160600 | 1604500 | 3765100 | 990000 | 1217000 | 2207000 | WRD | Partially Incomplete |
| 136 | Stop Dam | Saloni | 2160600 | 1636500 | 3797100 | 1116000 | 1236000 | 2352000 | WRD | Partially Incomplete |
| 137 | Gabian | Saloni | 66500 | 206400 | 272900 | 63794 | 18199 | 81993 | GRAM PANCHAYAT | COMPLETE |
| 138 | B.W.R.(dayaram) | Saloni | 4300 | 24100 | 28400 | 3956 | 22530 | 26486 | GRAM PANCHAYAT | COMPLETE |
| 139 | B.W.R.(fakir) | Saloni | 4300 | 24100 | 28400 | 3841 | 23400 | 27241 | GRAM PANCHAYAT | COMPLETE |
| 140 | B.W.R.(tularam) | Saloni | 4300 | 24100 | 28400 | | | | GRAM PANCHAYAT | Cancelled |
| 141 | B.W.R.(Nandram) | Saloni | 4300 | 24100 | 28400 | | | | GRAM PANCHAYAT | Cancelled |
| 142 | Form pond(khedi) | Saloni | 127000 | 33000 | 160000 | 109385 | | 109385 | GRAM PANCHAYAT | COMPLETE |
| 143 | Stop Dam | Ruwatala | 191900 | 985300 | 1177200 | 149181 | 545864 | 695045 | GRAM PANCHAYAT | Partially Incomplete |
| 144 | Stop Dam | Ruwatala | 212400 | 1087800 | 1300200 | 184990 | 759699 | 944689 | GRAM PANCHAYAT | Partially Incomplete |
| 145 | Stop Dam | Ruwatala | 286600 | 1500100 | 1786700 | | | | GRAM PANCHAYAT | Cancelled |
| 146 | Stop Dam | Ruwatala | 207400 | 1056200 | 1263600 | | | | GRAM PANCHAYAT | Cancelled |
| 147 | Gabian | Ruwatala | 52200 | 161800 | 214000 | 51681 | 158500 | 210181 | GRAM PANCHAYAT | COMPLETE |
| 148 | Gabian | Ruwatala | 66500 | 206400 | 272900 | 61761 | 193693 | 255454 | GRAM PANCHAYAT | COMPLETE |
| 149 | Gabian | Ruwatala | 46500 | 144000 | 190500 | 44714 | 138897 | 183611 | GRAM PANCHAYAT | COMPLETE |
| 150 | Pond (DS) | Ruwatala | - | - | 1314000 | | | | GRAM PANCHAYAT | Partially Incomplete |
| 151 | Pond (DS) | Ruwatala | - | - | 1858000 | | | | GRAM PANCHAYAT | Partially Incomplete |
| 152 | Pond (DS) | Ruwatala | | | 389000 | | | | GRAM PANCHAYAT | COMPLETE |
| 153 | B.W.R.(Gautam/ramcharan) | Ruwatala | 4300 | 24100 | 28400 | 3871 | 23800 | 27671 | GRAM PANCHAYAT | COMPLETE |
| 154 | B.W.R.(Melaram/latkhor) | Ruwatala | 4300 | 24100 | 28400 | 4205 | 23183 | 27388 | GRAM PANCHAYAT | COMPLETE |
| 155 | B.W.R.(radheshyam) | Ruwatala | 4300 | 24100 | 28400 | | | | GRAM PANCHAYAT | Cancelled |

| | | | | | | | | | | |
|-----|-------------------|----------|--------|---------|---------|--------|--------|--------|----------------|----------------------|
| 156 | B.W.R.(gaindu) | Ruwatala | 4300 | 24100 | 28400 | | | | GRAM PANCHAYAT | Cancelled |
| 157 | B.W.R.(Bhaggu) | Ruwatala | 4300 | 24100 | 28400 | | | | GRAM PANCHAYAT | Cancelled |
| 158 | B.W.R.(Teshwar) | Ruwatala | 4300 | 24100 | 28400 | | | | GRAM PANCHAYAT | Cancelled |
| 159 | B.W.R.(ghanshyam) | Mohara | 4300 | 24100 | 28400 | 2064 | | 2064 | GRAM PANCHAYAT | Cancelled |
| 160 | B.W.R.(maniram) | Mohara | 4300 | 24100 | 28400 | | | | GRAM PANCHAYAT | Cancelled |
| 161 | B.W.R.(birsingh) | Mohara | 4300 | 24100 | 28400 | 2064 | | 2064 | GRAM PANCHAYAT | Cancelled |
| 162 | B.W.R.(sonuram) | Mohara | 4300 | 24100 | 28400 | | | | GRAM PANCHAYAT | Cancelled |
| 163 | B.W.R.(dayaram) | Kasari | 4300 | 24100 | 28400 | | | | GRAM PANCHAYAT | Cancelled |
| 164 | B.W.R.(Jaitram) | Kasari | 4300 | 24100 | 28400 | 4128 | | 4128 | GRAM PANCHAYAT | COMPLETE |
| 165 | B.W.R.(Ganeshram) | Kasari | 4300 | 24100 | 28400 | | | | GRAM PANCHAYAT | Cancelled |
| 166 | B.W.R.(paldram) | Kasari | 4300 | 24100 | 28400 | | | | GRAM PANCHAYAT | Cancelled |
| 167 | Pond | Kasari | | - | 1310000 | | | | GRAM PANCHAYAT | Incomplete |
| 168 | Stop Dam | Thekwa | 290000 | 1408000 | 1698000 | 251349 | 422537 | 673886 | GRAM PANCHAYAT | Partially Incomplete |
| 169 | Stop Dam | Thekwa | 290000 | 1408000 | 1698000 | 226008 | 668000 | 894008 | GRAM PANCHAYAT | Partially Incomplete |
| 170 | BWR(tularam) | Thekwa | 4300 | 24100 | 28400 | | | | GRAM PANCHAYAT | Cancelled |